

# National Construction Code (NCC) Section J2 Glazing Quick Reference

## COMMERCIAL & PUBLIC BUILDINGS

### CLIMATE ZONE 6 (MELBOURNE)

#### SINGLE CLEAR GLAZING

(Assumed Thermal Performance of Glass and Aluminium Frame of U-Value 7.0, SHGC 0.65)

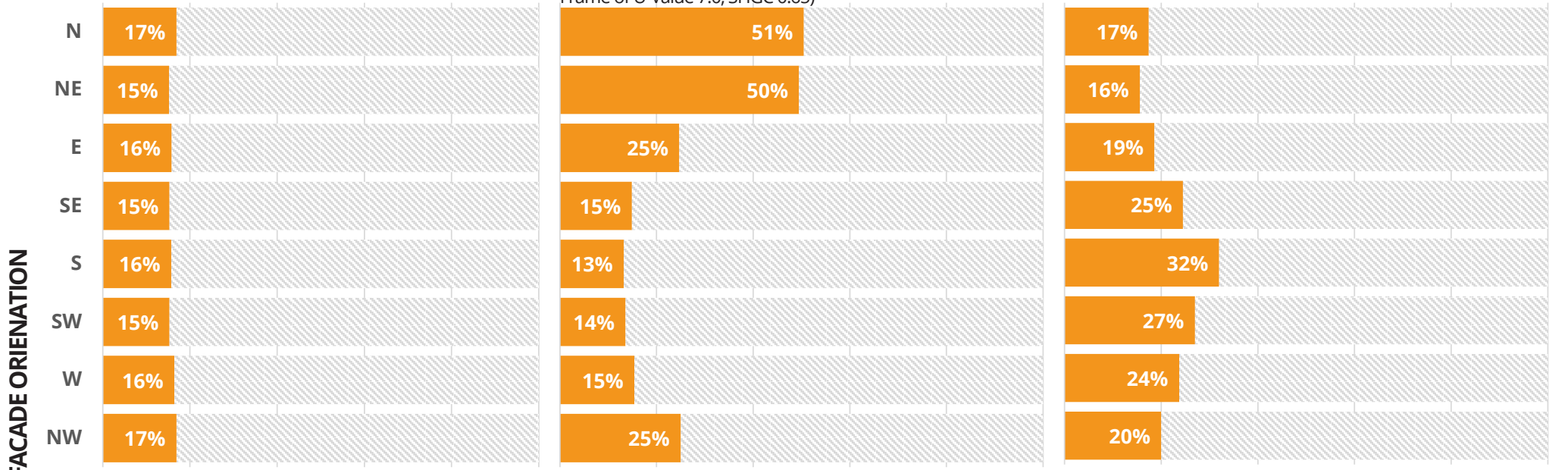
#### SINGLE CLEAR GLAZING

#### WITH EXTERNAL SHADING DEVICE

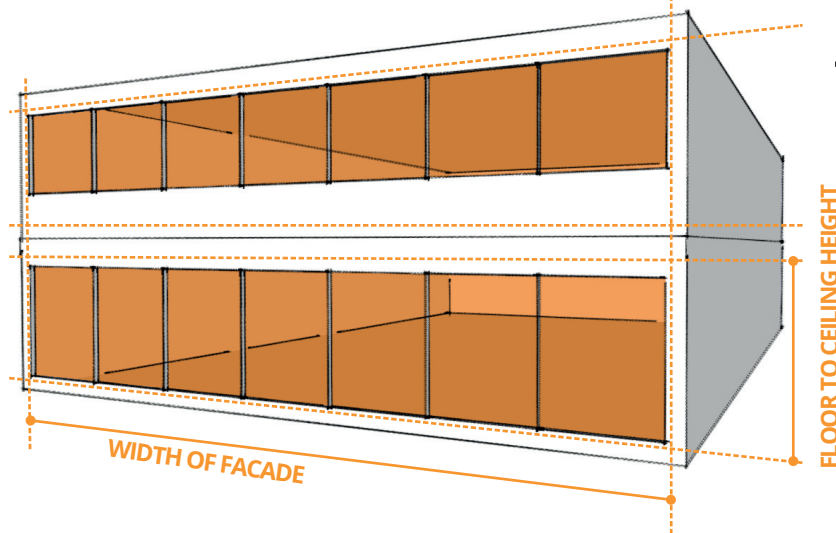
(Assumed Thermal Performance of Glass and Aluminium Frame of U-Value 7.0, SHGC 0.65)

#### DOUBLE CLEAR GLAZING

(Assumed Thermal Performance of Glass and Aluminium Frame of U-Value 4.4, SHGC 0.60)



**ALLOWABLE FACADE GLAZING PERCENTAGE** (If the calculated % is equal to or below the highlighted % it complies with the NCC Section J2 Glazing Deemed-to-Satisfy Provisions)



$$\frac{\text{TOTAL GLAZING AREA} \div}{\text{FLOOR TO CEILING HEIGHT} \times \text{WIDTH OF FACADE}} = \text{FACADE GLAZING \%}$$

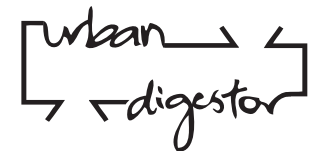
refer to tables above

The Section J2 Deemed-To-Satisfy (DTS) Provisions, assesses glazing per floor per facade orientation.

**U-value** measures heat transfer through a system. The lower the U-value, the more insulating the product is.

**Solar Heat Gain Coefficient (SHGC)** is a measure of how much solar radiation passes through the window. The lower the SHGC value the less heat passes through the glass.

**External Shading Device** is a fixed external structure, or surrounding building that restricts at least 80% of summer solar radiation or an automated external device like roller blinds or venetians



www.urbandigestor.com  
 L8, 180 Russell Street,  
 Melbourne VIC 3000  
 info@urbandigestor.com.au  
 03 9639 4936

# National Construction Code (NCC) Section J2 Glazing Quick Reference

## SHOPS & SHOWROOMS

### CLIMATE ZONE 6 (MELBOURNE)

#### SINGLE CLEAR GLAZING

(Assumed Thermal Performance of Glass and Aluminium Frame of U-Value 7.0, SHGC 0.65)

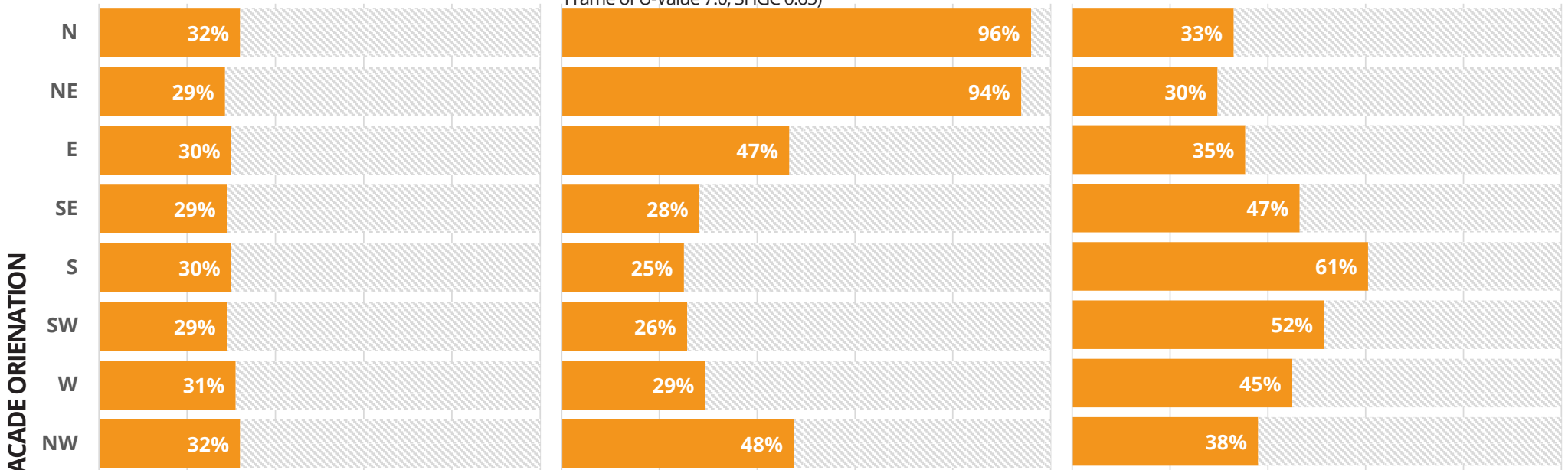
#### SINGLE CLEAR GLAZING

##### WITH EXTERNAL SHADING DEVICE

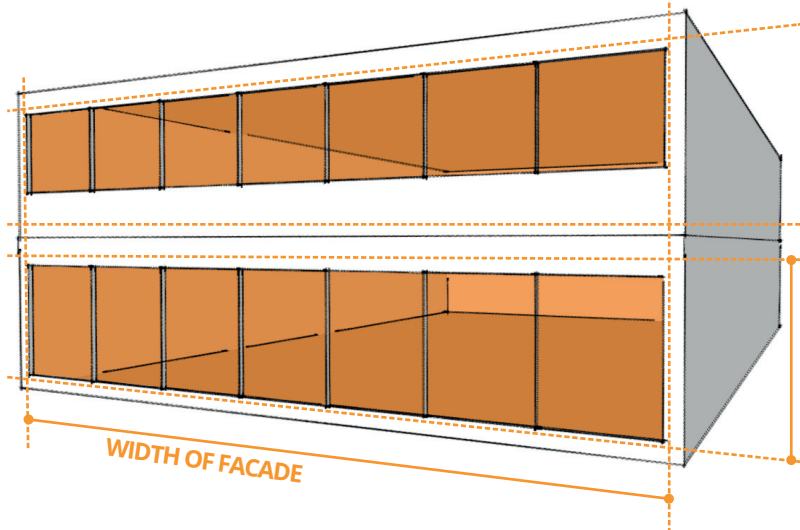
(Assumed Thermal Performance of Glass and Aluminium Frame of U-Value 7.0, SHGC 0.65)

#### DOUBLE CLEAR GLAZING

(Assumed Thermal Performance of Glass and Aluminium Frame of U-Value 4.4, SHGC 0.60)



**ALLOWABLE FACADE GLAZING PERCENTAGE** (If the calculated % is equal to or below the highlighted % it complies with the NCC Section J2 Glazing Deemed-to-Satisfy Provisions)



$$\frac{\text{TOTAL GLAZING AREA} \div}{\text{FLOOR TO CEILING HEIGHT} \times \text{WIDTH OF FACADE}} = \text{FACADE GLAZING \%}$$

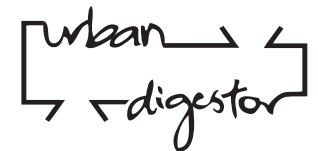
**refer to tables above**

The Section J2 Deemed-To-Satisfy (DTS) Provisions, assesses glazing per floor per facade orientation.

**U-value** measures heat transfer through a system. The lower the U-value, the more insulating the product is.

**Solar Heat Gain Coefficient (SHGC)** is a measure of how much solar radiation passes through the window. The lower the SHGC value the less heat passes through the glass.

**External Shading Device** is a fixed external structure, or surrounding building that restricts at least 80% of summer solar radiation or an automated external device like roller blinds or venetians



www.urbandigestor.com  
 L8, 180 Russell Street,  
 Melbourne VIC 3000  
 info@urbandigestor.com.au  
 03 9639 4936